

微型交流减速马达

5I(R)K 交流减速马达 (90W~120W)(90mm)

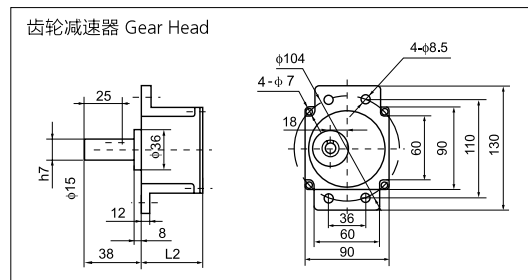
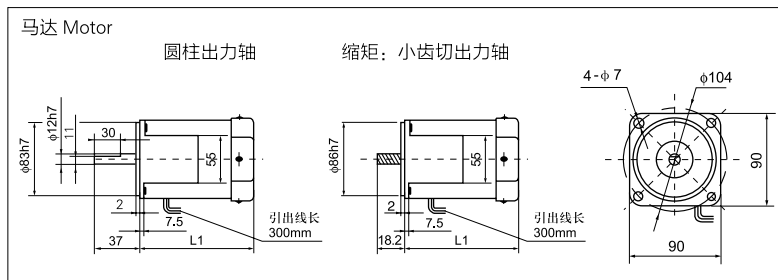


微型减速马达 Mini Gear Motor

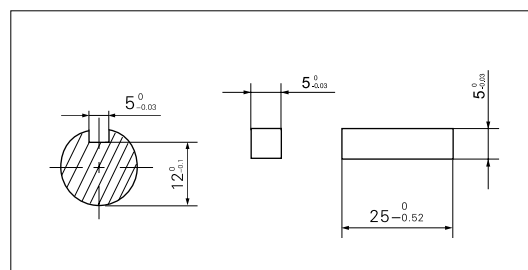
马达特性表 Specifications of motor

马达类型	马达型号 Motor Model No.		出力 Force W	周波数 Peripheral Wave No. Hz	电压 Voltage V	电流 Current A	起动转矩 Start Turning Moment gcm	定格 Rating		起动电容 Start Condenser		齿轮型号 Gear Model No	
	圆柱出力轴 Cylindrical Output Shaft	小齿切出力轴 Pinion Cut Output Shaft						转矩 Turning Moment gcm	回转数 Revolving No. rpm	容量 Capacity μF	耐电压 Resistance Voltage V	培林(轴承) Pairing Bearing	中间齿轮 Middle Gear
可逆马达 Rerersible Motor	5RK90A-A	5RK90GN/GU-A	90	50	110	2.0	6400	6750	1300	25	250	5GN/GU-K	5GN10X
				60	110	1.80	5400	5650	1550	20			
	5RK90A-C	5RK90GN/GU-C	90	50	220	1.0	6400	6750	1300	6.0	500	5GN/GU-K	5GN10X
				60	220	0.90	5400	5650	1550	5.0			
	5RK120A-A	5RK120GN/GU-A	120	50	110	2.40	8500	9000	1300	35	250	5GN/GU-K	5GN10X
				60	110	2.20	7200	7550	1550	30			
	5RK120A-C	5RK120GN/GU-C	120	50	220	1.20	8500	9000	1300	8.0	500	5GN/GU-K	5GN10X
				60	220	1.10	7200	7550	1550	7.0			
感应马达 Induction Motor	5IK90A-A	5IK90GN/GU-A	90	50	110	1.90	5750	6750	1300	25	250	5GN/GU-K	5GN10X
				60	110	1.70	5000	5650	1550	20			
	5IK90A-C	5IK90GN/GU-C	90	50	220	0.95	5750	6750	1300	5.50	500	5GN/GU-K	5GN10X
				60	220	0.85	5000	5650	1550	5			
	5IK120A-A	5IK120GN/GU-A	120	50	110	2.30	7650	9000	1300	30	250	5GN/GU-K	5GN10X
				60	110	2.10	6400	7550	1550	25			
	5IK120A-C	5IK120GN/GU-C	120	50	220	1.15	7650	9000	1300	7	500	5GN/GU-K	5GN10X
				60	220	1.05	6400	7550	1550	6			

外型尺寸 External dimension



型号 Type	减速比 Reduction Ratio	L1(mm)	L2(mm)
5IK(RK)90A(GN)(GU)	1:3~1:20	140	43
5IK(RK)120A(GN)(GU)		140	43
5IK(RK)90A(GN)(GU)	1:25~1:180	140	65
5IK(RK)120A(GN)(GU)		140	65



扭矩表 Gear Head-Torque Table(Kg-cm)

(kg-cm $\times 9.8 \div 100$)=N·m (牛顿·米)

同步转速 : r/min		500	300	200	150	120	100	75	60	50	30	20	15	10	7.5	6	5	3
减速比 Gear reduction ratio	50Hz	3	5	7.5	10	12.5	15	20	25	30	50	75	100	150	200	250	300	500
	60Hz	3.6	6	9		15	18		30	36	60	90	120	180		300	360	600
允许负载 Permissible load	90W kg-cm	14	23	35	46	58	69	92	110	133	200	200	200	200	200	200	200	200
	120W kg-cm	18.7	30.7	46	61	77	92	123	147	177	200	200	200	200	200	200	200	200

表列数字是根据马达同步运转的转速，在额定负载情况下实际输出转速为同步运转转速的 80%~90%。浅灰色表示输出轴运转方向与马达转向相同，白色栏表示输出方向与马达轴转向相反。

Note: Speed figures are based on synchronous speed, The actual output speed, under rated torque conditions, is about 10~20% less than synchronous speed, a grey background indicates output shaft of geared motor rotates in the same direction as output shaft of motor. A white background indicates rotation in the opposite direction.

微型交流减速马达

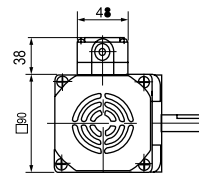
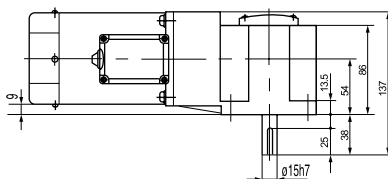
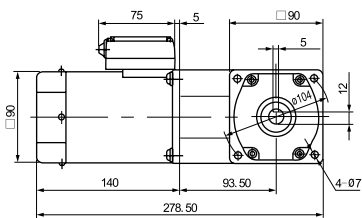
5I(R)K 直角减速马达 (90W~120W)(90mm)



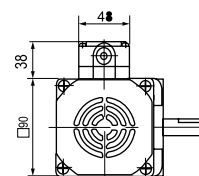
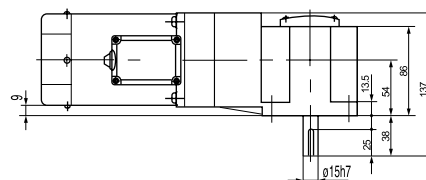
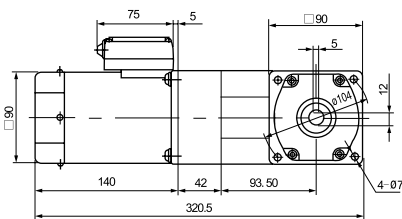
微型交流减速马达 Mini Gear Motor

5I(R)K90(120)/5GN □ RT

组合：马达 + 直角中实减速箱 (减速比：1:3~200)

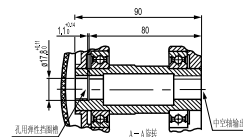
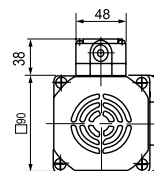
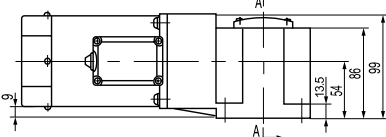
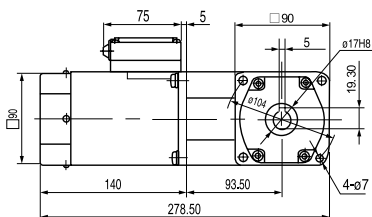


组合：马达 + 中间减速箱 + 直角中实减速箱 (减速比：1:250~2000)

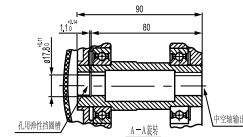
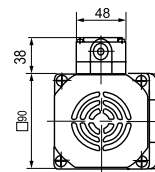
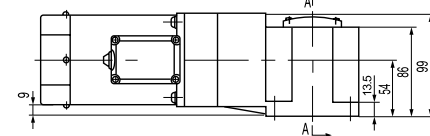
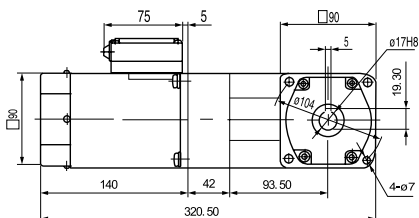


5I(R)K90(120)/5GN □ RC

组合：马达 + 直角中空减速箱 (减速比：1:3~200)



组合：马达 + 中间减速箱 + 直角中空减速箱 (减速比：1:250~2000)



扭矩表 Gear Head-Torque Table(Kg-cm)

(kg·cm × 9.8 ÷ 100) = N·m (牛顿·米)

同步转速：r/min		500	300	200	150	120	100	75	60	50	30	20	15	10	7.5	6	5	3
减速比 Gear reduction ratio	50Hz	3	5	7.5	10	12.5	15	20	25	30	50	75	100	150	200	250	300	500
	60Hz	3.6	6	9		15	18		30	36	60	90	120	180		300	360	600
允许负载 Permissible load	90W kg-cm	14	23	35	46	58	69	92	110	133	200	200	200	200	200	200	200	200
	120W kg-cm	18.7	30.7	46	61	77	92	123	147	177	200	200	200	200	200	200	200	200

表列数字是根据马达同步运转的转速，在额定负载情况下实际输出转速为同步运转转速的 80%~90%。浅灰色表示输出轴运转方向与马达转向相同，白色栏表示输出方向与马达转向相反。

Note: Speed figures are based on synchronous speed, The actual output speed, under rated torque conditions, is about 10~20% less than synchronous speed, a grey background indicates output shaft of geared motor rotates in the same direction as output shaft of motor. A white background indicates rotation in the opposite direction.