

上海良信电器股份有限公司

Shanghai Liangxin Electrical Co., Ltd.

NDM3 系列塑壳断路器

NDM3 Series MCCB

# 产品说明书

## Product Manual

(IPD-ENG-DEV-T32 A0 2019-11-05)

编制	王虎	日期	2020.07.29
审核	彭浩然	日期	2020.07.29
会签	尹宏雨	日期	2020.07.29
批准	胡琪	日期	2020.07.29




## 目 录

1. 适用范围与用途/ Application scope.....	4
2. 型号说明/ Model and implication .....	4
3. 技术参数/ Main technical parameters.....	7
4. 工作环境/ Stand working conditions.....	9
5. 接线方式(接线图)/ Wiring Method.....	12
6. 产品外形及安装尺寸/ Shape dimension & Dimension.....	13
7. 安装方式/ Mounting Method.....	18
8. 附件说明书/ Accessory.....	19
9. 使用和维护/ Application & Maintenance.....	21
10. 注意事项/ Notices.....	22
11. 订货须知/ Accessory list and installation.....	24

## 1. 适用范围与用途/ Application scope

NDM3 系列塑料外壳式断路器(以下简称断路器), 是本公司采用国际先进设计, 制造技术研制、开发的新型断路器之一, 按照其额定极限短路分断能力(Icu)的高低, 分为 C 型, L 型, M 型, H 型四类。


该产品具有体积小、分断高、飞弧短, 抗震动的特点, 是陆地及船舶使用的理想产品, 其额定工作电压至 AC 690 额定绝缘电压为 1000V, 适用于交流 50/60Hz 的电路中作不频繁转换和电动机不频繁起动之用。断路器具有隔离功能, 相应符号为: 

断路器具有过载、短路和欠电压保护功能, 能保护线路及电源设备不受损坏。

本断路器可垂直安装(即竖装), 亦可水平安装(即横装)。

本产品符合标准 IEC 60947-2、GB/T14048.2。

NDM3 series of moulded case circuit breakers (Hereinafter referred to as the MCCBs), which is one of the self-developed new generation MCCB of Nader. According to the level of the rated ultimate short-circuit breaking capacity, the breaker can be classified into four types: Type C (Basic type), Type L (Standard type), Type M (Less high breaking type) and Type H (High breaking type).

The breaker possesses the features such as compactness, high breaking capacity, short arc over and anti-Vibration etc, which is the ideal product for both land and marine use. The rated working voltage is AC 690, with the insulation voltage of 1000V, will be suitable for in-frequency switching of circuits and starting of motors in 50/60Hz circuit. The breaker has disconnecting function. The symbol of isolation is: 

The breaker has functions of overload protection, short circuit protection and undervoltage protection which can protect circuit and electrical power unit properly.

The breaker can be installed vertically (upright), as well as horizontally (crosswise).

The breaker meets the criterions: IEC 60947-2、GB/T14048.2。

## 2. 型号说明/ Model and implication

ND	M	2	-	□	□	□	/	□	□	□	□	□	□	□	□
1	2	3	4	5	6	7	8	9	10	11	12	13	14	15	
序号 SN	序号名称 SN Name		NDM3												
1	企业代号 Enterprise code		ND: “Nader” 牌低压电器 Nader low-voltage apparatus												
2	产品代号 Product code		M: 塑料外壳式断路器 Molder case circuit breaker												
3	设计序号 Design SN		3												
4	壳架等级 Shell frame level		63、100、125、250、400、630、800、1600												
5	分断能力级别 Breaking level code		C: 基本型 type C:Basic type												
			L: 标准型 type L:Standard type												
			M: 较高分断型 M:Less high breaking type												
			H: 高分断型 C: High breaking type												
6	操作方式 Operation mode		无代号: 手柄直接操作 no code represents direct handle operation												
			P: 电动操作 P: represents motor operation												
			Z: 转动手柄 Z: represents rotary handle operation												
7	极数 Pole number		3、4												

8	脱扣器代号 Release form code	0: 无脱扣器 0: represents frame only without trip unit
		2: 仅有瞬时脱扣器 2: represents magnetic only
		3: 复式脱扣器 3: represents both thermal and matnetic
9	附件代号 Accessory code	参见附件表 see the Accessory Code table
10	用途代号 For Application code	无代号: 配电型 no code represents Power distribution
		2: 电动机保护型 2: represents motor protection
11	4 极产品中 N 极 (中性极) 形式 N-pole type of four pole product below	A: N 极不安装过电流脱扣器, 且 N 极始终接通 A: N-pole is always close without overload release
		B: N 极不安装过电流脱扣器, 且 N 极与其它三极一起合分 B: N-pole is open or close together with other three poles and without overload release
		C: N 极安装过电流脱扣器, 且 N 极与其它三极一起合分 C: N-pole is open or close together with other three poles and with overload release
12	特殊用途 Special purpose	Q: 检有压自复式功能 (除 NDM3-160/1600 外) Q: Self-compound function with pressure detection (except NDM3-160/1600))
13	特殊功能代号 Special function code	I: 过载报警不脱扣功能 (除 NDM3-63/100/160/1600) I: The overload alarm not tripped (except NDM3-63/100/160/1600)
14	额定电流 Setting current	额定电流 Setting current
15	接线方式 Cabling type	无代号: 常规产品 No code: Normal product
		P: 联接排 P: Extended busbar
		Z1: 板后接线 Z1: Rear-plate connection
		Z2H: 插入式板后接线 Z2H: plug-in rear-plate connection
		Z2Q: 插入式板前接线 Z2Q: plug-in front -plate connection
		Z3H: 插入式板后接线一体式 Z3H: Integrated plug-in rear-plate connection
		Z3Q: 插入式板前接线一体式 Z3Q: Integrated plug-in front -plate connection

附件代号  
Accessory Code

附件名称/Description of accessories	分励脱扣器/S hunt release	双辅助触头/Double auxiliary contacts	单辅助触头/Single auxiliary contact	欠电压脱扣器/Under-voltage release	分励脱扣器 双辅助触头/S hunt release, Double auxiliary contacts	分励脱扣器 单辅助触头/S hunt release, Single auxiliary contact	分励脱扣器欠电压脱扣器/S hunt release, Under-voltage release	二组双辅助触头/Two groups of Double auxiliary contacts	二组单辅助触头/Two groups of Single auxiliary contact	双辅助触头单辅助触头/Double auxiliary contacts, Single auxiliary contact	欠电压脱扣器双辅助触头/Under-voltage release, Double auxiliary contacts	欠电压脱扣器单辅助触头/Under-voltage release, Single auxiliary contact	报警触头/Alarm contact	分励脱扣器报警触头/S hunt release, alarm contact	双辅助触头报警触头/Double auxiliary contacts, alarm contact	欠电压脱扣器报警触头/Under-voltage release, alarm contact	分励脱扣器辅助与报警触头/S hunt release, Auxiliary and alarm contacts	辅助与报警触头/Auxiliary and alarm contacts	双辅助触头辅助与报警触头/Double auxiliary contacts/Auxiliary and alarm contacts	欠电压脱扣器辅助与报警触头/Under-voltage release and alarm contact
代号/Code	10	20	21	30	40	41	50	60	61	62	70	71	08	18	28	38	48	58	68	78

## 3. 技术参数/ Main technical parameters

表/ Table 1

型号/ Type	壳架等级额定电流/ Frame size /In (A)	额定绝缘电压 Rated insulation voltage Ui(V)	额定工作电压/ Rated voltage Ue(V)AC	额定极限短路分断能力/ Rated ultimate breaking capacity Icu (kA)	额定运行短路分断能力/Rated operating short circuit breaking capacity Ics (kA)	飞弧距离 / Arcing distance (mm)	额定电流/ Rated current In(A)	操作性能 Operating cycles	
NDM3-63L	63	1000	380/400/415	36	36	≤50	10,16,20,25,32,40,50,63		
NDM3-63M			380/400/415	55	40				
			500	20	15				
NDM3-63/4P			660/690	12	10				
			380/400/415	55	40				
			500	20	15				
NDM3-100C	100	1000	380/400/415	40	30	≤50	10,16,20,25,32,40,50,63,80,100	通电/ Charged 8000 不通电/ Uncharged 20000	
			500	15	12				
660/690			12	10					
NDM3-100/4P			380/400/415	40	30				
			500	15	12				
			660/690	12	10				
NDM3-125L	125	1000	380/400/415	50	40	≤50	16、20、25、32、40、50、63、80、100、125		
			380/400/415	70	50				
500			40	40					
NDM3-125H			660/690	20	10				
			380/400/415	100	70				
			380/400/415	70	50				
NDM3-125/4P	500	40	40						
	660/690	20	10						
NDM3-160C	160	1000	380/400/415	40	30	≤50	125、140、160	通电/ Charged 8000 不通电/ Uncharged 20000	
			380/400/415	50	40				
380/400/415			70	50					
NDM3-160M			660/690	20	10				
			380/400/415	70	50				
			660/690	20	10				
NDM3-160/4P									
NDM3-250C	250	800	400	35	≤50	100、125、140、160、180、200、225、250	通电/ Charged 8000 不通电/ Uncharged		
NDM3-250L		1000	380/400/415	50				40	
NDM3-250M			380/400/415	70				50	
			500	40				40	
		660/690	20	10					

NDM3-250H			380/400/415	100	70			20000
NDM3-250/4P			380/400/415	70	50			
			500	40	40			
			660/690	20	10			

续表 1

型号/ Type	壳架等级额定电流/ Frame size /In (A)	额定绝缘电压 Rated insulation voltage Ui(V)	额定工作电压/ Rated voltage Ue(V)AC	额定极限短路分断能力/ Rated ultimate breaking capacity Icu (kA)	额定运行短路分断能力 /Rated operating short circuit breaking capacity Ics (kA)	飞弧距离 / Arcing distance (mm)	额定电流/ Rated current In(A)	操作性能 Operating cycles	
NDM3-400C	400	1000	380/400/415	35	35	≤100	225、250、315、350、400	通电/ Charged 7500 不通电/ Uncharged 10000	
NDM3-400L			380/400/415	50	50				
NDM3-400M			380/400/415	70	70				
			500	50	50				
NDM3-400H			660/690	20	15				
			380/400/415	100	75				
NDM3-400/4P			380/400/415	70	70				
			500	50	50				
NDM3-630C	630	1000	380/400/415	35	35	≤100	400、500、630	通电/ Charged 7500 不通电/ Uncharged 10000	
			NDM3-630L	380/400/415	50				50
			NDM3-630M	380/400/415	70				70
				500	30				30
			NDM3-630H	660/690	20				15
				380/400/415	100				75
			NDM3-630/4P	380/400/415	70				70
				500	30				30
NDM3-800M	800	1000	380/400/415	70	70	≤100	630、700、800	通电/ Charged 3000 不通电/ Uncharged 5000	
			500	30	30				
			660/690	20	15				
			NDM3-800H	380/400/415	100				75
				380/400/415	70				70
			NDM3-800/4P	500	30				30
660/690	20	15							



#### 4. 工作环境/ Stand working conditions

- 1) 海拔 $\leq 2000$  m
  - 2) 环境温度 $-35\sim+70^{\circ}\text{C}$
  - 3) 环境温度 $+40^{\circ}\text{C}$ 时相对湿度不超过 50%，较低温度可以有较高湿度，如： $20^{\circ}\text{C}$ 时相对湿度可达 90%
  - 4) 对于因温度变化所产生的凝霜应采取相应的措施
  - 5) 能耐受潮湿空气的影响
  - 6) 能耐受盐雾、油雾的影响
  - 7) 能耐受霉菌的影响
  - 8) 断路器接至主回路的安装类别为 III，断路器不接至主回路的安装类别为：II
  - 9) 污染等级为 3 级
  - 10) 无爆炸危险的介质中，且介质无足以腐蚀金属和破坏绝缘的气体与导电尘埃的地方
  - 11) 在没有雨雪侵袭的地方
  - 12) 当用户使用条件较上述严酷时应与制造商协商
  - 13) 储存环境 见表 2
  - 14) 主要结构特点：断路器热动型脱扣器具有反时限特性，电磁脱扣器为瞬时动作见表 3
  - 15) 产品降容系数表 见表 4
  - 16) 高海拔降容系数 见表 5
  - 17) 导体部分接线螺纹孔端子拧紧扭力矩 见表 6
  - 18) 报警功能参数 见表 7
- 1) Altitude $\leq 2000$  m
  - 2) Ambient temperature:  $-35\sim+70^{\circ}\text{C}$
  - 3) The relative humidity of the air does not exceed 50% at  $40^{\circ}\text{C}$ . Higher relative humidity is permitted at lower temperature, such as 90% relative humidity at  $20^{\circ}\text{C}$ .
  - 4) The protective actions should be taken for frost which formed by variation of temperature.
  - 5) Resisting the effects by humid air.
  - 6) Resisting effects by salt mist and oil mist.
  - 7) Resisting the effects by mould.
  - 8) Installation category for the breaker which is connected to main circuit: III, Installation category for the breaker which is not connected to main circuit: II.
  - 9) Pollution degree: 3.
  - 10) Service place without explosive media, gas and dust which are corrosive and conductive.
  - 11) Be mounted free from rain and snow.
  - 12) Should consult with the manufacturer when the working conditions are harsher.
  - 13) Storage environment table 2
  - 14) Tripping characteristic: Thermal trip unit has inverse-time characteristic. Electromagnetic trip unit has instantaneous operation characteristic table 3
  - 15) Product derating coefficient table table 4
  - 16) Derating coefficient in high altitude place table 5
  - 17) Terminal torsion value for wiring thread hole in conductor section table 6
  - 18) Parameters of alarm function

表 2/ table 2

项目 Item	规范 Description
周围温度 Ambient temperature	$-40^{\circ}\text{C}\sim+75^{\circ}\text{C}$
相对湿度 Relative humidity	(Ambient temperature at $25^{\circ}\text{C}$ ) $\leq 95\%$

表 3/ table 3

脱扣器额定电流 (A) Rated Current of	热脱扣器 (环境温度 $+40^{\circ}\text{C}$ ) Thermal Trip Unit (Ambient Temperature is $40^{\circ}\text{C}$ )	电磁脱扣器 动作电流 (A) Tripping Current	备注 Remark

trip unit	1.05In (冷态) 不动作时间 (h) Non-tripping Time as 1.05In (Cold)	1.3In (热态) 动作时间 (h) Tripping Time as 1.3In (Hot)	of Electromagnetic trip unit (A)	
10 ≤ In ≤ 63	1	1	10InX (1 ± 20%)	配电型 Power distribution protection type
63 < In ≤ 800	2	2	10InX (1 ± 20%)	
10 ≤ In ≤ 800	1.0In (冷态) 不动作时间 (h) Non-tripping Time as 1.0In (Cold)	1.2In (热态) 动作时间 (h) Tripping Time as 1.2In (Hot)	12InX (1 ± 20%)	电动机保护型 Motor protection type
	2	2		

注 1/Note1: NDM3-100、NDM3-63 中 10~25A 电磁脱扣器动作电流值为 300A ± 20% / The tripping current of electromagnetic trip for the current range from 10 to 25A of NDM3-100、NDM3-63 is 300A ± 20%

注 2/Note2: 过载报警不脱扣的产品无反时限脱扣特性, 有反时限报警功能; 报警后建议及时处理, 长时间过载后建议更换断路器 The products with overload alarm do not inverse protection of overload, but inverse alarm function; Timely treatment is recommended after the alarm, Circuit Breaker are proposed to be replaced after prolonged overload

表 4/ table4

塑壳式断路器降容系数表 Molded Case Circuit Breaker Derating Coefficient Table

序号 No.	壳架等级额定电流 Frame size rated current	温度对应产品降容系数表 Derating coefficient table							
		温度 Temperature	40°C	45°C	50°C	55°C	60°C	65°C	70°C
1	63/100/125/160	温度 Temperature	40°C	45°C	50°C	55°C	60°C	65°C	70°C
		降容系数 Derating Coefficient	1	0.977	0.954	0.931	0.907	0.883	0.858
2	250	温度 Temperature	40°C	45°C	50°C	55°C	60°C	65°C	70°C
		降容系数 Derating Coefficient	1	0.982	0.963	0.944	0.924	0.904	0.882
3	400	温度 Temperature	40°C	45°C	50°C	55°C	60°C	65°C	70°C
		降容系数 Derating Coefficient	1	0.981	0.962	0.942	0.922	0.901	0.879
4	630	温度 Temperature	40°C	45°C	50°C	55°C	60°C	65°C	70°C
		降容系数 Derating Coefficient	1	0.979	0.958	0.937	0.915	0.893	0.871
5	800	温度 Temperature	40°C	45°C	50°C	55°C	60°C	65°C	70°C

		降容系数 Derating Coefficient	1	0.980	0.960	0.939	0.918	0.897	0.877
6	1600	温度 Temperature	40°C	45°C	50°C	55°C	60°C	65°C	70°C
		降容系数 Derating Coefficient	1	0.960	0.920	0.870	0.820	0.760	0.700

注: 当使用环境温度低于 40°C 时, 产品可正常使用, 不存在降容。

15) 高海拔降容系数

- 1: 海拔高度低于 2km, 不需要考虑降容;
- 2: 海拔高度高于 2km, 降容系数将下表:

Note: When ambient temperature is less than 40°C, breaker can be used normally, without any derating.

15) Derating coefficient in high altitude place

- 1: When breaker was used in place less than 2km, derating is needless.
- 2: When breaker was used in place higher than 2km, derating is necessary.

表 5/ table5

塑壳断路器高海拔降容系数表

NDM3-63~800: Molded Case Circuit Breaker Derating Coefficient Table in High altitude Place

海拔高度 Altitude (km)	工作电流修正系数 Rated working current	工作电压修正系数 Ultimate working voltage	工频耐压修正系数 Rated working frequency withstand voltage
2	In	Ue	U
2.5	In	Ue	U
3	0.98In	0.87Ue	0.909U
3.5	0.972In	0.846Ue	0.858U
4	0.963In	0.813Ue	0.820U
4.5	0.951In	0.781Ue	0.784U
5	0.938In	0.743Ue	0.752U

NDM3-1600: Molded Case Circuit Breaker Derating Coefficient Table in High altitude Place

海拔高度 Altitude (km)	工作电流修正系数 Rated working current	工作电压修正系数 Ultimate working voltage	工频耐压修正系数 Rated working frequency withstand voltage
2	1	1	1
3	0.94	0.870	0.9
4	0.88In	0.725Ue	0.771U
5	0.81In	0.638Ue	0.629U

表 6/ table6  
接线端子/安装螺钉拧紧扭力矩 Torsion value for wiring terminal

序号 No.	壳架等级额定电流(A) Frame size rated current	螺纹直径(mm) Thread diameter	扭力矩(N.m) Torsion value
1	63/100/125/160/250	M8	12
		M4	2.4
2	400	M10	20
		M6	6
3	630/800	M12	28
		M6	6
4	1600	M10	20
		M5	4

表 7/ table7  
报警功能参数 parameers of alarm function

名称 Name		过载报警不脱扣模块 Overload alarm non-tripping module
电压规格(V)/约定发热电流(Ith) Voltage specifications(V)/ Conventional thermal current(Ith)		AC250V/10A
状态示意图 State diagram	报警 Alarm	
	非报警 Non-alarm	

### 5. 接线方式(接线图)/ Wiring Method

连接导线采用的截面积和相适应的额定电流见表 8

Table 8 of sectional area and applicable rated current adopted in wiring

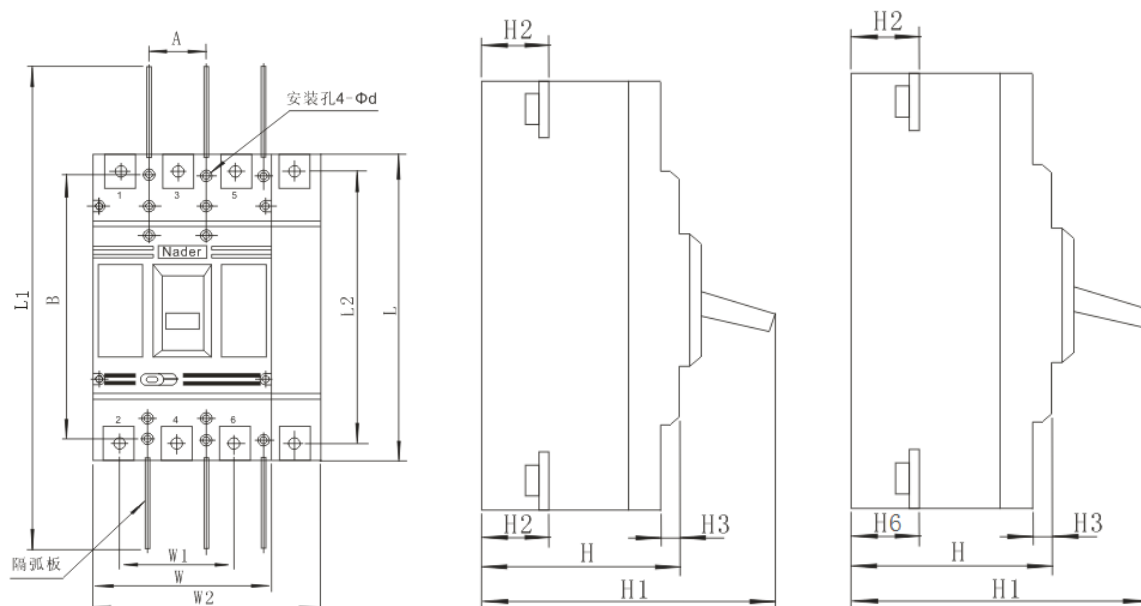
额定电流(A) Rated current A	10 12.5	16 20	25	32	40 50	63	80	100	125 140	160	180 200 225	250	315 350	400	500	630	700 800	1000	1250
导线截面积 Wire sectional area(mm <sup>2</sup> )	1.5	2.5	4.0	6.0	10	16	25	35	50	70	95	120	185	240	150 x2	185 x2	240 x2	300x 2	400x2

## 6. 产品外形及安装尺寸/ Shape dimension & Dimension

本产品可板前接线，也可板后接线，具体见图 1、图 2

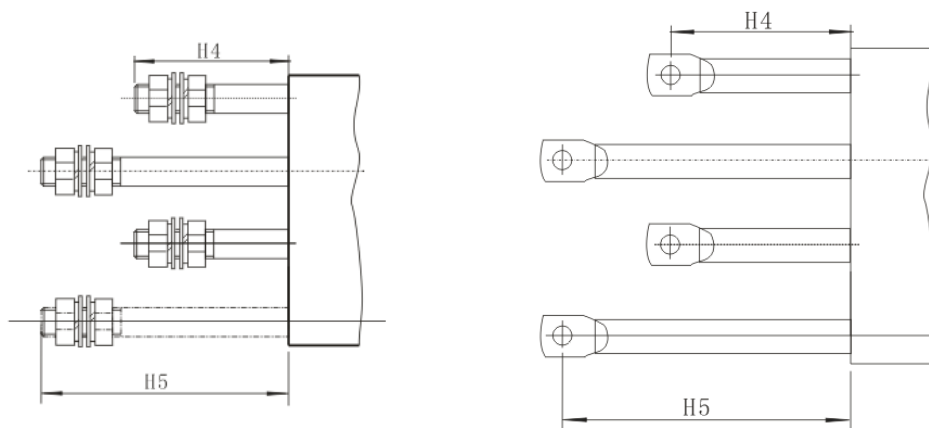
This product can also be front plate connector, wiring on back of the board, specific see Figure 1, figure 2

图 1 板前接线/ Fig 1 Front connection



NDM3-63~800

图 2 板后接线/ Fig 2 Rear connection



NDM3-63~250

NDM3-400~800

表 9/ Table 9

型号/ Table	外形尺寸// Dimentions														安装尺寸/ Mounting dimensions		
	板前接线/ Front connection											板后接线/ Rear connection			A	B	Φd
	W	W1	L	H	H	W2	L1	H1	H2	H3	H6	L2	H4	H5			
NDM3-63L(M)/100C	75	50	130	65	-	230	81	24.5	8.8	-	116.3	60.5	102.5	25	111	3.5	
NDM3-63/100 (4P)	100				100												
NDM3-125L	92	60	150	69	-	250	100	24	7	-	132	53	73	30	129	4.5	
NDM3-125M(H)				87.5	122		118										
NDM3-125/4P	-																
NDM3-160C	92	60	139	75.5	-	240	106	22	11.3	-	121	66	91.5	30	118	4.5	
NDM3-160L																	
NDM3-160M																	
NDM3-160/4P																	
NDM3-250C	105	70	165	63.4	-	250	88	28	10.3	-	132	60	85.5	35	126.6	4.5	
NDM3-250L																	
NDM3-250M(H)	107			88			122.5	24	7	-	144	58	78		126		
NDM3-250/4P	-			105	142	265	139.5										

续表 9

型号/ Table	外形尺寸/ Dimentions													安装尺寸/ Mounting dimensions		
	板前接线/ Front connection											板后接线/ Rear connection		A	B	Φd
	W	W1	L	H	W2	L1	H1	H2	H3	H6	L2	H4	H5			
NDM3-400C (L)	150	96	257	104.5	-	457	150.6	38	7.5	-	224	42	82	44	194	7
NDM3-400M (H)																
NDM3-400/4P	-															
NDM3-630C (L)	182	116	270	108.5	-	470	153	43	7.5	45	234	44	88	58	200	7
NDM3-630M (H)																
NDM3-630/4P	-															
NDM3-800M (H)	210	140	280	112	-	496	162	40	8	43	243	33	98	70	243	7
NDM3-800/4P																

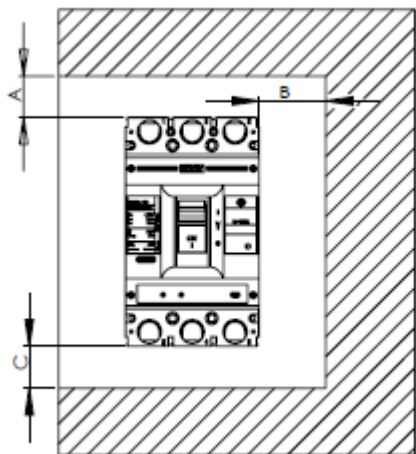
注: 未注公差尺寸的极限偏差按 GB/T 1804-m。

Note: The limit deviation not indicated with the tolerance dimensions is as per GB/T 1804-m.

6.1 安装在金属小柜中的绝缘距离(单位: mm), 如下图:

6.1 Insulation distance mounted in the metal cabinet (unit: mm), as shown below:

安装距离 Mounting distance	A(进线端到柜面) A (inlet wire end to the cabinet face)		B(侧面到柜面距离) B (distance from side to cabinet)	C(出线端到柜面距离) C (outlet wire end to the cabinet face)
	带端子罩 With a terminal cover	不带端子罩 Without a terminal cover		
型号 Specification				
NDM3-63	25	65	30	30
NDM3-100	25	65	30	30
NDM3-125	25	65	30	30
NDM3-160	25	65	30	30
NDM3-250C	25	65	30	30
NDM3-250	25	65	30	30
NDM3-400	25	120	35	35
NDM3-630	25	120	35	35
NDM3-800	25	120	35	35
NDM3-1600	25	110	35	35

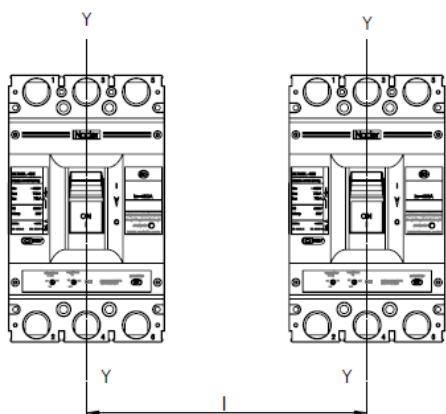




## 6.2 断路器排装之间的最小中心距离

## 6.2 Minimum center distance between rowed circuit breakers

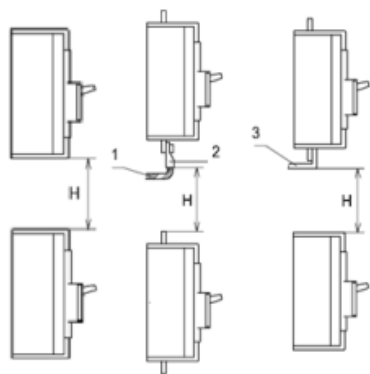
型号 Specification	断路器宽度 (mm) Width of circuit breaker (mm)		中心距离 (mm) Center distance (mm)	
	3 极 3P	4 极 4P	3 极 3P	4 极 4P
NDM3-63	75	100	105	130
NDM3-100	75	100	105	130
NDM3-125	92	122	122	152
NDM3-160	92	122	122	152
NDM3-250C	105	/	140	/
NDM3-250	107	142	137	172
NDM3-400	150	198	190	238
NDM3-630	182	240	222	280
NDM3-800	210	280	250	320
NDM3-1600	210	280	250	320



## 6.3 断路器叠装之间最小距离

## 6.3 Minimum center distance between stacked circuit breakers

型号 Specification	H(断路器上下距离) H (distance of circuit breaker from bottom)	
	带端子罩 With a terminal cover	不带端子罩 Without a terminal cover
	NDM3-63	90
NDM3-100	90	90
NDM3-125	90	91
NDM3-160	90	91
NDM3-250C	90	93
NDM3-250	90	93
NDM3-400	155	155
NDM3-630	155	155
NDM3-800	155	155
NDM3-1600	/	155



- 注: 1、电缆绝缘联接  
2、联接且无绝缘  
3、产品通电前检查端子罩或相间隔板装配到位。

Note: 1. Cable insulating connection  
2. Connection without insulation  
3. Check whether the terminal cover or phase partition is assembled properly before products are energized.

## 7. 安装方式/ Mounting Method

### 7.1 绝缘测试

本断路器出厂前已按标准规定绝缘测试。因断路器带有电子线路板, 安装前如进行复测, 必须按如下步骤:

- ① 用 500VDC 兆欧表
- ② 在断路器处于断开状态, 对进出连接板 1-2、3-4、5-6 之间, 和 1、3、5 连接板与外壳之间(外壳用金属箔覆盖)分别进行。
- ③ 对接至主电路的欠电压脱扣器, 在进线与断路器外壳间。
- ④ 绝缘电阻不小于 20MΩ。

注: 也可分离电子线路板后进行绝缘测试

### 7.2 安装

请安装在金属阻燃物上, 断路器可垂直安装, 也可以水平安装。

#### 7.1.1 Insulation test

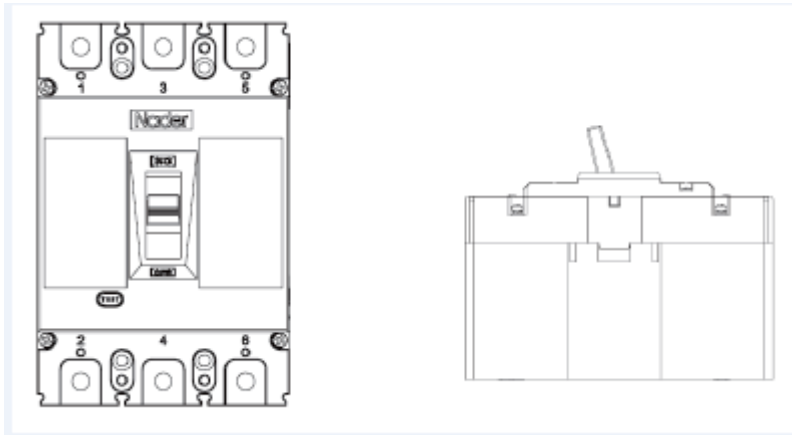
Insulation test has been already carried out on the breaker according to standard before leaving factory. Due to wire circuit, the following steps should be operated if insulation test is carried out on the breaker again.

- ① 500VDC tramegger
- ② When breaker is broken up, insulation test is conducted separately between connecting panels 1-2, 3-4, 5-6, connecting panels 1, 3, 5 and shell.
- ③ Undervoltage tripper connected to the main circuit is arranged between intake wire and breaker shell.
- ④ Insulation resistance is not less than 20MΩ.

Notes: Insulation test could be operated after wire circuit is separated.

#### 7.2 Install

Installed on metal or other flameproof material in vertical or horizontal mode.



垂直安装  
Vertical

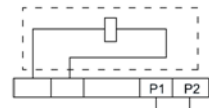
水平安装  
Horizontal

## 8. 附件说明书/ Accessory

### 8.1 欠压脱扣器

断路器带有欠压脱扣器时, 应使欠电脱扣器先通电, 断路器才允许合闸。根据外挂欠电压模块上的接线端子编号接入电源(直流电源不必区分正负极)

当电源电压下降到欠压脱扣器额定工作电压的 70%~35% 范围内时, 欠压脱扣器能可靠的分断断路器; 当电源电压低于欠压脱扣器额定工作电压的 35% 时, 欠压脱扣器能防止断路器闭合; 当电源电压高于欠压脱扣器额定工作电压的 85% 时, 欠压脱扣器能保证断路器可靠闭合。



欠压脱扣器接线图

### 8.1 Undervoltage tripper

Wiring diagram of under-voltage release

**When the breaker has an undervoltage tripper, the und and then the breaker allows switch on.**

Power supply is accessed according to wiring connector number on the external undervoltage module (anode and cathode of DC power supply are not differentiated).

When power voltage declines to 70%~35% of the rated working Voltage of undervoltage tripper, the undervoltage tripper can reliably break the breaker up; when power voltage is lower than the rated working voltage of undervoltage tripper by 35%, the undervoltage tripper can prevent the breaker from closing; when power voltage is higher than the rated working voltage of undervoltage tripper by 85%, the undervoltage tripper can guarantee the reliable closure of breaker.

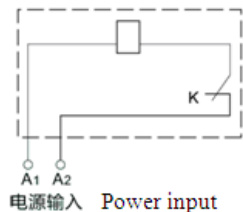
### 8.2 分励脱扣器

根据引出的导线编号接入电源(直流电源不必区分正负极)。当分励脱扣器的外加电压介于额定控制电源电压的 70%-110% 之间时, 能可靠分断断路器。

### 8.2 Shunt tripper

Power supply is accessed according to wiring connector number on the external undervoltage module (anode and cathode of DC power supply are not differentiated). When impressed voltage of shunt tripper is between

70% and 110% of rated control power voltage, the breaker can be reliably broken.



电源输入 Power input

分励脱扣器接线图

Wiring diagram of shunt tripper

8.3 辅助触头、报警触头

8.3.1 辅助、报警触头接入相应外围控制电路

8.3 Auxiliary contact, alarm contact

8.3.1 Auxiliary and alarm contacts accessed into relative external control circuit/

分类 Category	壳架电流 (A) Frame current (A)	约定发热电流 Ith(A) Convention al thermal current Ith (A)	交流 400V 时额定工作电流 Ie (A) Rated working current Ie (A) for AC 400V
辅助触头 Auxiliary contact	63-250	3	0.3
	400-800		0.3
报警触头 Alarm contact	63-250	3	0.3
	400-800		0.3

8.3.2 辅助、报警触头状态指示图

8.3.2 Status indicator diagrams of auxiliary and alarm contacts

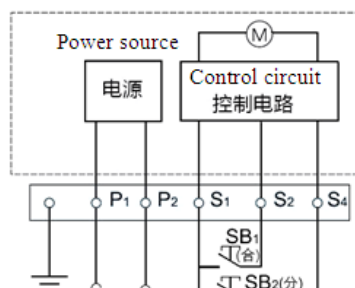
附件名称 Accessory Name	断路器状态 Status of breaker	线路接通状态 Connection status of circuits
辅助触头 Auxiliary contact	“分”或“自由脱扣” Breaking or free tripping	
	“合” Closing	“接通”与“断开”相互转换 Switchover between closing and opening
报警触头 Alarm contact	“分”或“合” Breaking or closing	
	“自由脱扣” Free tripping	“接通”与“断开”相互转换 Switchover between closing and opening

8.4 电动操作机构

在外加电源情况下, 可通过电动操作机构对断路器进行合、分操作。

8.4 Motor-operated mechanism

The breaker can be closed and opened by an motor-operated mechanism in the condition of external power supply.



电动操作机构接线图

Wiring diagram of motor-operated mechanism

8.5 手动操作机构

8.5.1 安装前, 安装操作手柄的开关柜门按图开好孔, 开孔

中心离铰链距离大于 100 mm。

8.5.2 把已在面盖上固定好操作机构的断路器安置于安装板上, 并稍作固定。

8.5.3 把操纵杆方轴固定于操作机构上安置方轴的方孔内。

8.5.4 关上开好孔的门板, 调整断路器的位置, 使方轴中心与手柄开孔中心一致。

8.5.5 打开开关柜门板, 当转动手柄“OFF”指示在水平位置时固定好手柄。

8.5.6 合上安装好转动手柄的开关柜门板, 试着操作手柄, 转动应灵活自如, 并且手柄在水平位置时, 断路器应分闸, 手柄在垂直位置时, 断路器应合闸。

8.5 Manual operating mechanism

8.5.1 Before installation, a switch cabinet door for installing

operating handle is holed in accordance with the diagram.

Distance between the holed part and the hinge is greater than 100 mm.

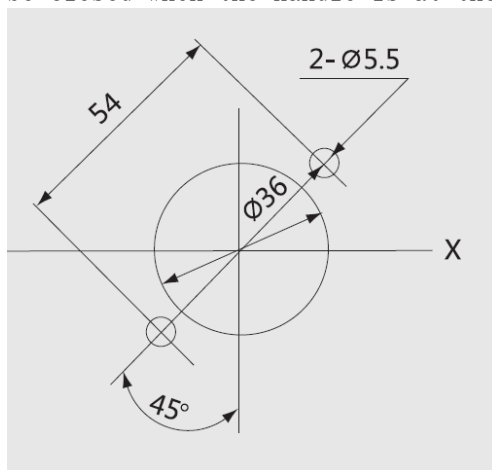
8.5.2 The breaker with an operating mechanism fixed on cover is installed on the installation panel and slightly fixed then.

8.5.3 The square shaft of an operating rod is fixed in a square hole on the operating mechanism.

8.5.4 The holed door plank is closed and position of the breaker is adjusted so that centers of the square shaft and the handle hole are aligned.

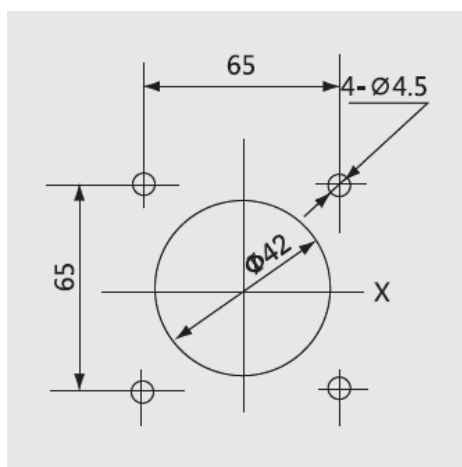
8.5.5 The switch cabinet door is opened. The rotary handle is fixed until "OFF" is at the horizontal position.

8.5.6 The switch cabinet door equipped with rotary handle is closed. The handle should be operated freely. The breaker should be opened when the handle is at the horizontal position, and it should be closed when the handle is at the vertical position.



A 型手柄开孔图

A type holeing diagram of handle



F 型手柄开孔图

F type holeing diagram of handle

## 9. 使用和维护/ Application & Maintenance

### 9.1 运行前检查和准备

运行前应检查以下各项

- (1) 核对接线是否正确, 见第 7 点接线方式图。
- (2) 确认端子间或暴露的带电部分没有短路或对地短路情况。
- (3) 确认端子连接和固定螺钉均应紧固无松动
- (4) 断路器带有欠电压脱扣器, 应使脱扣器先通电, 断路器才允许合闸。

### 9.1 Examination and preparation before working

The following items should be examined before working

- (1) Check whether wiring is right; see the seventh wiring diagram.
- (2) Make sure that there is no short circuit on the part between every two terminals or on exposed electrified parts or no short circuit. to earth. .
- (3) Make sure terminal connection and fixing screw are fastened.
- (4) If the breaker has an undervoltage tripper, the breaker is allowed to close only when the undervoltage tripper is electrified.

### 9.2 试运行 Pilot run

按 9.1 条各项全部确认无异常情况后, 可以进行试运行。

- (1) 扳动操作手柄, 投入电源。
- (2) 断路器主电路带电后, 按紧急脱扣按钮, 断路器应脱扣, 操作手柄处于脱扣位置。如果试运行都能满足, 可投入运行。

Carry out pilot run after all items in rule 9.1 are assured normal.

- (1) Pull the operating handle and switch power supply on.

(2) Press emergency release button after main circuit of the breaker is electrified. Then, the breaker should be released and the operating handle is at released position. Operation can be carried out if pilot run successes.

### 9.3 维护 Maintenance

- ◆ 维护检查必须有专业技术人员负责。
- ◆ 用户如需选用内、外附件，按所订型号由本公司提供，以保证质量。如用户自行选购或改装，本公司不能负责。
- ◆ 在执行维护操作前，必须先完成下列操作：

- (1) 使断路器分闸；
- (2) 断开电源与断路器的连接(包括主电路、辅助电路)
- (3) 将断路器从安装位置上卸下(一般用于插入式，固定式最好也如此)。

**断路器维护在正常操作条件下每年一次，在非正常条件下每半年一次，以下为维护内容：**

- (1) 再扣断路器，合、分断路器，在断路器合闸时用脱扣按钮使断路器脱扣，往复操作 5 次，断路器应能可靠进行再扣、合、分、脱扣动作；
- (2) 清除断路器表面及连接处的灰尘(用清洁、干燥的抹布擦拭)；
- (3) 清洁隔弧板，如必要则需要更换隔弧板；
- (4) 检查所有连接情况，用砂布擦除氧化物，用可溶解剂清洁，拧紧螺栓和螺母；
- (5) 如果断路器还装有其它内、外附件，应逐一检查各个附件，以确保其处于正常工作状态。  
(按照 8 附件说明详细内容进行测试)

- ◆ Maintenance and check should be finished by professional technicians.
- ◆ To guarantee quality, the company provide internal and external accessories to customer according to the subscribed type. The company is free from responsibility if the customer purchases or refits internal and external accessories by himself.
- ◆ The following operations should be finished before maintenance.
  - (1) Open the breaker.
  - (2) Disconnect power supply and the breaker (including main and auxiliary circuits);
  - (3) Uninstall the breaker from the installing position (suitable for insertion type, so as fixation type).

**Maintenance on the breaker should be carried out once every year in normal operation condition or once every half a year in an abnormal condition. The followings are included in maintenance.**

- (1) Fasten, close and break the breaker. Release the breaker by a release button when it is closed. The breaker should be fastened, closed, broken and released reliably again after the above operations are carried out for five times;
- (2) Remove dust on the surface and connection part of the breaker (by clean and dry cloth);
- (3) Clean flash barrier, and exchange it if necessary;
- (4) Check all connections; wipe oxide off by abrasive cloth; clean by dissoluble lotion; tighten the bolt and nut;
- (5) If there are other accessories installed on the breaker, all accessories should be examined one by one to make sure normal working condition.

(test in according to details in Accessory 8)

## 10. 注意事项/ Notices

### 10.1 安装注意事项

- (1) 断路器本体、底板(板后接线用)、底座(插入式接线用)固定在安装板上。
- (2) NDM3ZB 断路器内部线路板上有储能元件带电，请勿自行拆开，以免触电。需要是请于厂家联系。电源进线端两极禁止进行绝缘测试。
- (3) 与主电路连接



- 3.1. 必须由具有专业资格的人员进行配线作业。
- 3.2. 确认输入电源处在完全断开的情况下, 才能进行配线作业。
- 3.3. 必须安装本体后再进行配线。
- 3.4. 断路器配线必须符合上进下出, 即 1, 3, 5 端子接电源线, 2, 4, 6 端子接负载线, 不允许倒进线

#### 10.1 Installation precautions

(1) Main body, baseboard (for back-panel wire connection), base (for insertion wire connection) of the breaker are fixed on an installation panel.

(2) An energy storage element on the internal circuit board of the NDM3ZB breaker is electrified, please do not open it by yourself. Please contact the manufacturer if necessary. Insulation test is forbidden at two ends of the intake terminal of power supply.

(3) Connected to main circuit.

- 3.1. Wiring operation should be carried out by professional technicians.
- 3.2. Wiring operation should be carried out only when input power supply is assured completely broken.
- 3.3. Wiring operation should be carried out after the main body is installed.
- 3.4. In wiring operation of the breaker, wire should be inserted from the top and pulled out from the bottom; that is to say, terminals 1, 3, 5 are connected to power wire, and terminals 2, 4, 6 are connected to load wire; wiring sequence is not allowed to be exchanged.

#### 10.2 运行注意事项

- (1) 湿手不能操作断路器, 否则可能发生电击事故。
- (2) 断路器不能频繁操作, 否则会缩短断路器的使用寿命。
- (3) 带电动操作机构的断路器脱扣跳闸后, 电操机构必须使断路器再扣, 然后才能合闸。

#### 10.2 Running precautions

- (1) Wet hand is forbidden to operate the breaker, otherwise there is electric shock hazard.
- (2) The breaker cannot be operated frequently, otherwise its service life is shortened.
- (3) If there are release and tripping operation occurred on the breaker with an motor-operated mechanism, the breaker only can be closed after the motor-operated mechanism fastened it again.

#### 10.3 保修期与售后服务

本产品是在完善的品质管理体系下制造的, 当万一发生故障时, 对保修期与售后服务特作如下说明:

##### 保修期

在用户遵守保管和使用条件下, 从本公司发货之日起, 不超过 18 个月, 断路器封印完好, 产品如因制造质量问题而发生损坏或不能正常使用时, 本公司负责无偿修理或更换。但是, 如由于下述原因引起的故障, 即使在保修期内亦作有偿修理或更换。

- (1) 由于使用错误、自行改装及不适当的维修等原因。
- (2) 超过标准规范的要求使用。
- (3) 购买后由于摔落及安装过程中发生损坏等原因。
- (4) 地震、火灾、雷击、异常电压、其他天灾及二次灾害等原因。

##### 售后服务

- (1) 出现故障时, 请与供货商或本公司售后服务部门联系。
- (2) 保修期内的修理或更换: 由于本公司制造上的问题所造成的故障, 作无偿修理, 以至更换。
- (3) 超过保修期后的修理或更换: 在修理后能维持功能的场合下, 作有偿修理, 否则可作有偿更换。

#### 10.3 Warranty period and after-sales service

This product is manufactured in a fine quality management system. In case of error, warranty period and after-sales service are explained in the followings:

##### Warranty period

The company is responsible for free maintenance or exchange within 18 months from the delivery date at the following premises: the user abides by preservation and use rules; seal on the breaker is complete; the product is damaged or cannot be used normally by reason of quality problem. However, maintenance or exchange should be paid in warranty period if the error is caused by any one of the following reasons:

- (1) Improper use, self refit, improper maintenance and so on.
- (2) Use out of the standard specification.

(3) Damage caused by falling off or installation after purchase.

(4) Earthquake, fire disaster, lightning stroke, abnormal voltage, other natural disaster, second disaster and so on.

#### After-sales service

(1) Please contact the supplier or the after-sales service department of company if there is an error.

(2) Maintenance or exchange in warranty period: free maintenance or exchange is allowed if the error is up to manufacture technique.

(3) Maintenance or exchange out of warranty period: paid maintenance is operated if the function can be recovered, otherwise paid exchange is operated.

## 11. 订货须知/ Accessory list and installation

11.1 用户务必确认对本产品技术资料已有详细了解, 并应根据断路器将来使用的场合, 按“订货规范”表订货。

11.1 Customer should have a knowledge of technical documents of this product and maker order by an “Ordering rule” table in accordance with the future practical use of breaker

上海良信电器股份有限公司  
Shanghai Liangxin Electrical CO., LTD.  
上海市浦东新区申江南路 2000 号  
No. 2000, South Shenjiang Road. Pudong New District  
Shanghai, 201206  
T/021-68586699 F/021-23025796  
E/liangxin@sh-liangxin.com